



SOLTECH

CARTRIDGE VALVES

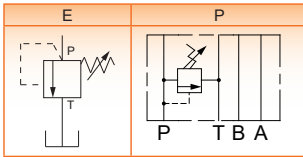
PRESSURE RELIEF VALVE-700 Bar

【SRV700】

※SPECIFICATION

Model	Max. Pres. MPa/Bar(PSI)	Max. Flow ℓ/min(GPM)	Filtration	Weight (Kg)
SRV700-6M-E	70/700 (10,000)	25(6.6)	according to NAS 1638 class 6 resp. ISO/DIN 4406 17/15/12	0.18
SRV700-6I-P				1.0

※GRAPHIC SYMBOL



SRV700-6M-E

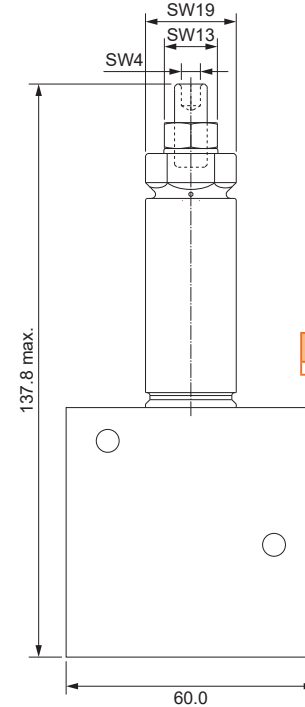
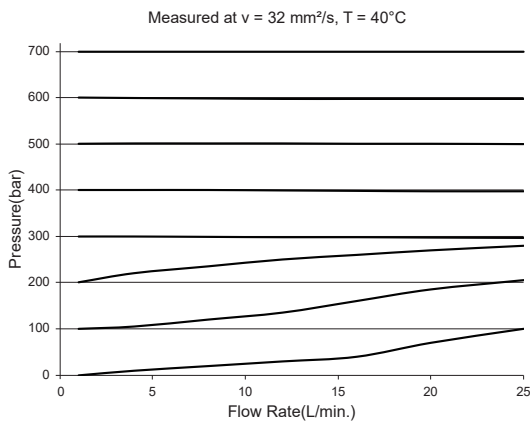
SRV700-6I-P

※MODEL NUMBER DESIGNATION

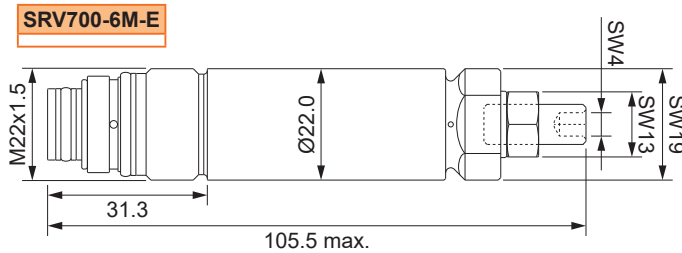
SRV	700-	6	M-	(E)-	V
Series No.	Max. Setting Pressure (bar)	Normal Size	Housing	Design Modular Type function Port P: P Port A: A Port B: B Port	Seal Material V: FKM
			(without Housing) Screw-In Cartridge only	I: ISO 4401 & Modular Type T1: In-Line Mounting, G1/4" T2: In-Line Mounting, G3/8"	
			Connection Thread M: Metric	Screw-In Cartridge: E	

★ The item with "(")" may be omitted.

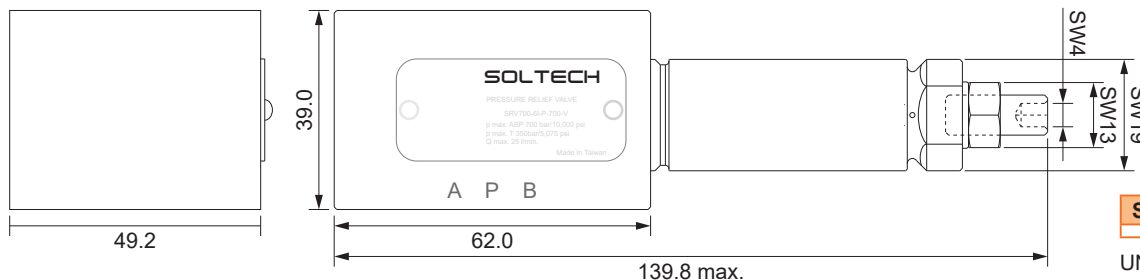
※DIMENSIONS & PERFORMANCE CURVE



SRV700-6T



SRV700-6M-E



SRV700-6I-P

UNIT: M.M.(INCH)

G

