



SOLTECH

PRESSURE CONTROLS

SOLENOID PILOT OPERATED RELIEF VALVES

【DBW-10,20,30】

※SPECIFICATION

MODEL	SIZE	MAX. PRES. MPa(PaSI)	MAX. FLOW ℓ/min(GPM)	WEIGHT (Kg)
DBW	10	32 (4640)	100(26.4)	3.3
	20		200(52.8)	4.4
	30		400(105.6)	6.5

※MODEL NUMBER DESIGNATION

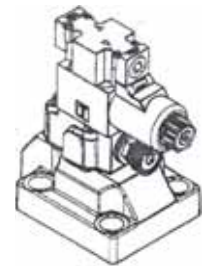
DBW	20	B	(90)
SERIES NO.	VALVE SIZE 10: 3/8" 20: 3/4" 30: 1(1/4)"	PRESSURE ADJ. RANGE MPa(PaSI) B: 0.7~7(101.5~1015) C: 7~14(1015~2030) H: 7~21(1015~3045) 2H: 7~310(1015~4495)	DESIGN No. OMIT: DIN 912 BOLTS 90: UNC BOLTS (NORTH AMERICA)



DBW-10



DBW-20



DBW-30

C

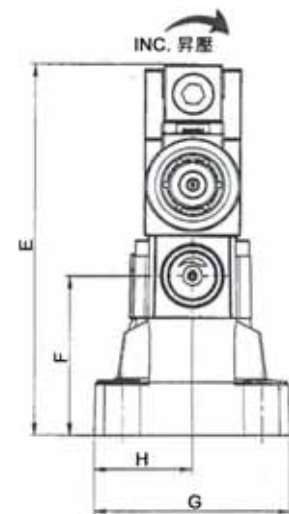
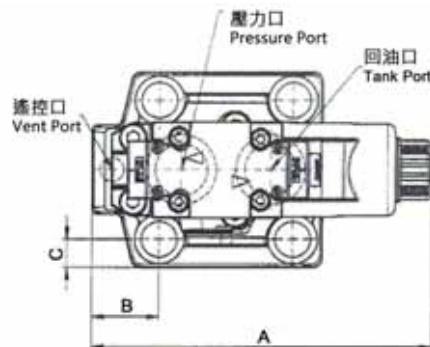
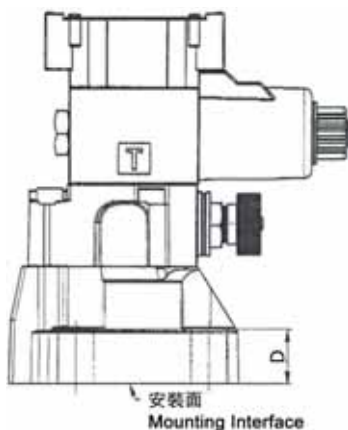
※ACCESSORIES

MODEL	SOCKET HEAD SCREW CAP			O RING			
	European Design. Std.	N. America Design Std.	Q'ty				
DBW-10	M12×40L	1/2-13UNC × 1-1/2" Lg.	4 Pcs	P9	1 Pcs	P18	2 Pcs
DBW-20	M16×45L	5/8-11UNC × 1-3/4" Lg.	4 Pcs	P9	1 Pcs	P29	2 Pcs
DBW-30	M12×40L	1/2-13UNC × 1-1/2" Lg.	4 Pcs	P19	1 Pcs	P36	2 Pcs

※PILOT VALVES DESIGNATION:

Vent Type	2B3A	2B3B	2B2B	2B2	3C2	3C3
Graphic Symbols						
Sol. Oper. Dir. Valve Model No.	SWG-02-2B3A (Please refer to page 7 for more information)	SWG-02-2B3B (Please refer to page 7 for more information)	SWG-02-2B2B (Please refer to page 7 for more information)	SWG-02-2B2 (Please refer to page 7 for more information)	SWG-02-3C2 (Please refer to page 7 for more information)	SWG-02-3C3 (Please refer to page 7 for more information)

DIMENSIONS



UNIT: M.M.(INCHES)

MODEL	A	B	C	D	E	F	H	G
DBW-10	164.3(6.47)	27.2(1.07)	12.1(0.48)	27(1.06)	191.1(7.52)	83.5(3.29)	78(3.07)	39(1.54)
DBW-20	170.8(6.72)	33.8(1.33)	14.25(0.56)	27.5(1.08)	188.1(7.41)	80.5(3.17)	98.5(3.88)	49.25(1.94)
DBW-30	184.2(7.25)	42(1.65)	15.9(0.63)	29(1.14)	191.1(7.52)	83.5(3.29)	114.5(4.51)	57.25(2.25)