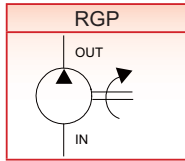


【RGP-F1】

※GRAPHIC SYMBOL



Gear pumps are made from high strength aluminum alloy body, high precision gear, Float bushing and DU bearing to provide simple structure, lightweight, high efficiency and low noise. It's used in the hydraulic system of truck, Construction machinery, lifter and transport machinery, mine machinery and agriculture machinery.



※MODEL NUMBER DESIGNATION

RGP	F1	06	R	B	(A)	(A)
Series No.	Series No. (c.c./rev) F1. 0.6~8.0 F2. 1.3~8.0 F3. 4~30 F4.10~40	Displacement (c.c./rev) 06~40	Rotation (View From Shaft End) R:Clockwise L:Counter-Clockwise	Shaft B: Straight Key Z: Taper	Inlet Position Omit: Side A: Back	Outlet Position Omit: Side A: Back

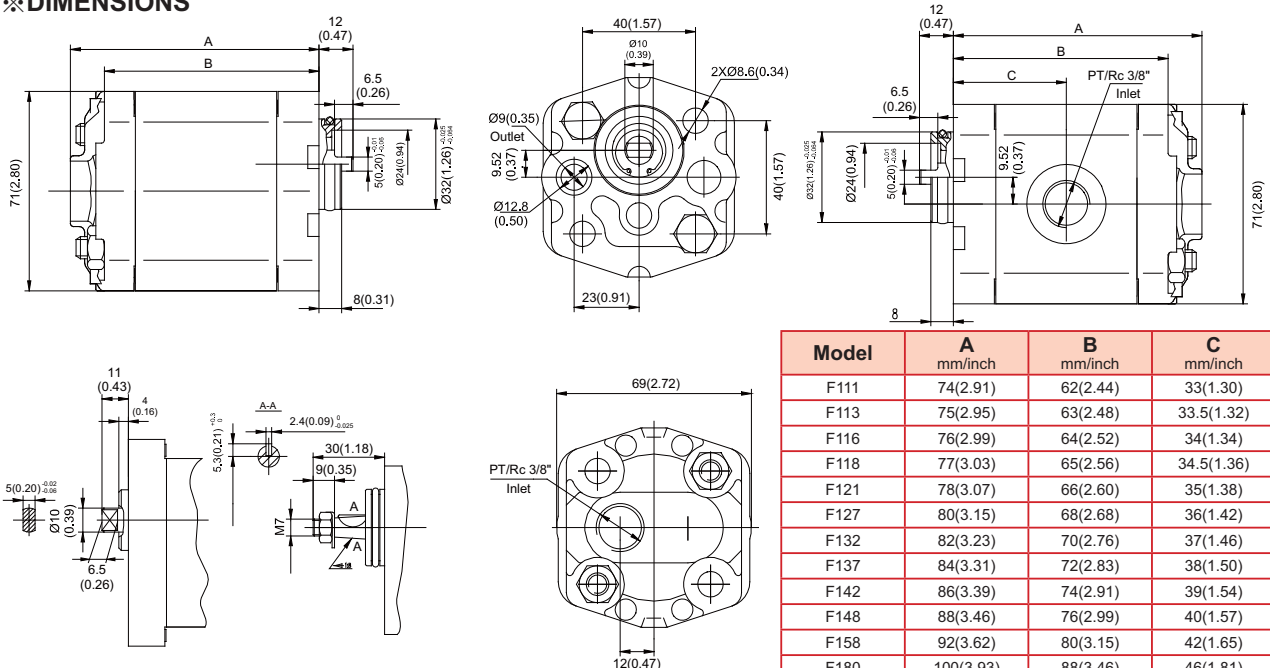
F

► Item With "(" may be omitted!!

※SPECIFICATION

Model	Displacement (c.c./rev)	Pressure MPa(Psi)		Speed (RPM)		Filter Precision (um)	Oil Temperature (°C)	Volumetric Efficiency (%)	Input Power (Kw)	Weight (kg)
		Rated	Max.	Max.	Min.					
F106	0.6	20 (2800)	25 (3500)	6000	600	≤ 25	-20~80	≥93	0.47	0.75
F111	1.1								0.86	0.77
F113	1.3								1.02	0.79
F116	1.6								1.25	0.80
F118	1.8								1.45	0.81
F121	2.1								1.65	0.82
F127	2.7								2.12	0.85
F132	3.2								2.51	0.87
F137	3.7								2.90	0.90
F142	4.2								3.29	0.92
F148	4.8	16 (2200)	20 (2800)	3500	3.76	0.95				
F158	5.8			2900	4.55	1.00				
F180	8.0			2100	6.27	1.10				

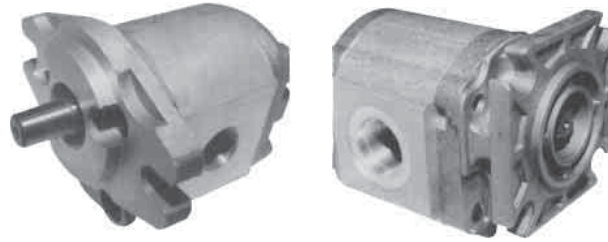
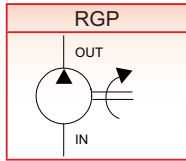
※DIMENSIONS



Model	A mm/inch	B mm/inch	C mm/inch
F111	74(2.91)	62(2.44)	33(1.30)
F113	75(2.95)	63(2.48)	33.5(1.32)
F116	76(2.99)	64(2.52)	34(1.34)
F118	77(3.03)	65(2.56)	34.5(1.36)
F121	78(3.07)	66(2.60)	35(1.38)
F127	80(3.15)	68(2.68)	36(1.42)
F132	82(3.23)	70(2.76)	37(1.46)
F137	84(3.31)	72(2.83)	38(1.50)
F142	86(3.39)	74(2.91)	39(1.54)
F148	88(3.46)	76(2.99)	40(1.57)
F158	92(3.62)	80(3.15)	42(1.65)
F180	100(3.93)	88(3.46)	46(1.81)

【RGP-F2】

※GRAPHIC SYMBOL



※MODEL NUMBER DESIGNATION

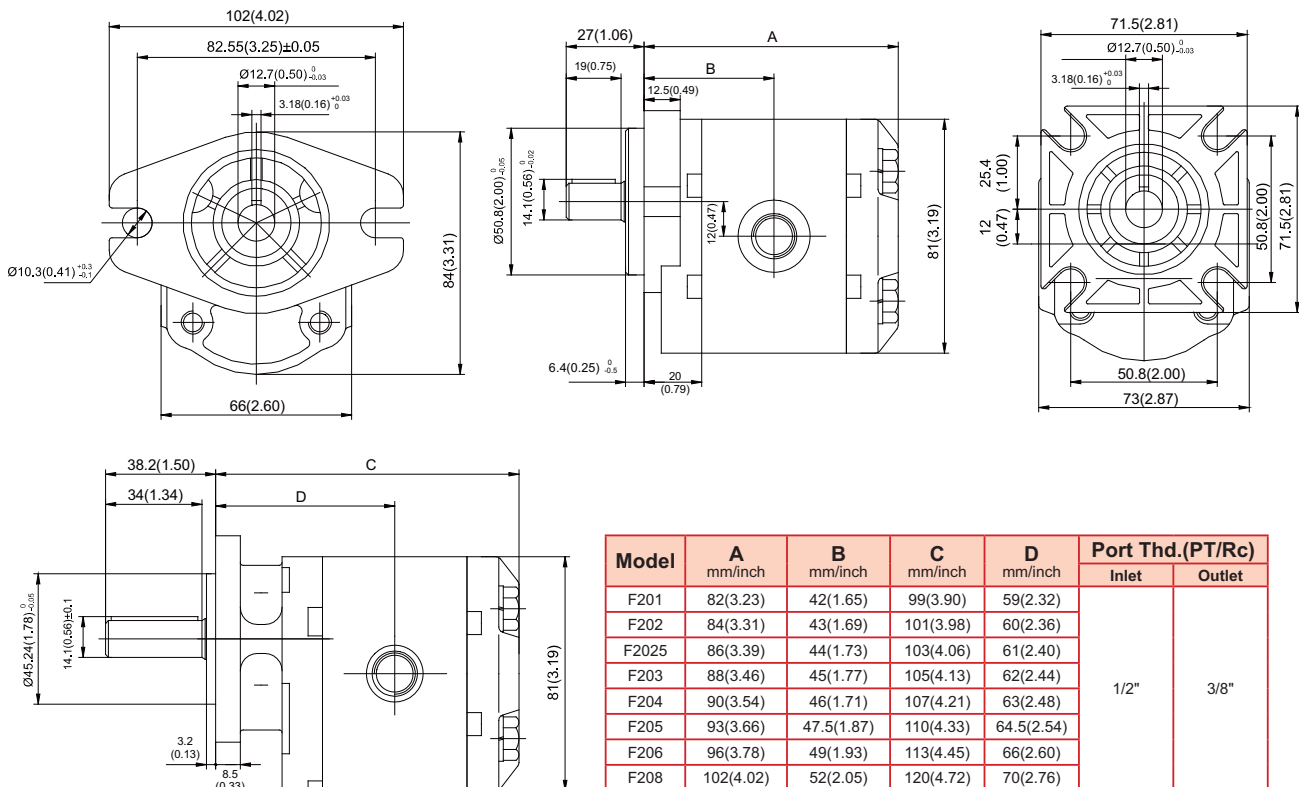
RGP	F2	06	R	(A)	(D)	(F)
Series No.	Series No. (c.c./rev) F1. 0.6~8.0 F2. 1.3~8.0 F3. 4~30 F4. 10~40	Displacement (c.c./rev) 06~40	Rotation (View From Shaft End) R:Clockwise L:Counter-Clockwise	Shaft Type Omit: Ø 12.7 Square Key A: Ø12 Square Key S9: SAE 9 Splined Key S11: SAE 11 Splined Key	Mounting Flange Omit: SAE 2 Bolt D: DIN 4 Bolt	In/Outlet Port Omit: Thread F: Flange

▶ Item With "(") may be omitted!!

※SPECIFICATION

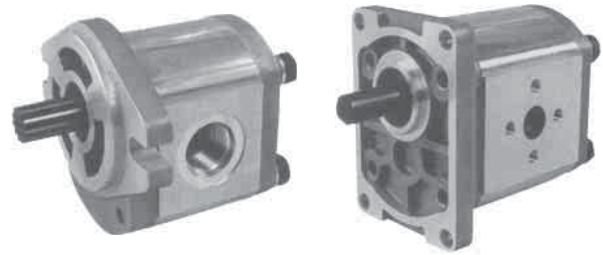
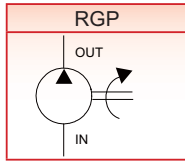
Model	Displacement (c.c./rev)	Pressure MPa(PSI)		Speed (RPM)		Filter Precision (um)	Oil Temperature (°C)	Volumetric Efficiency (%)	Input Power (Kw)	Weight (kg)
		Rated	Max.	Max.	Min.					
F201	1.3	20 (2800)	25 (3500)	3500	600	≤ 25	-20~80	≥93	1.02	0.92
F202	2.0								1.25	1.05
F2025	2.7								2.12	1.22
F203	3.4								2.17	1.36
F204	4.1								3.25	1.52
F205	5.1								4.15	1.72
F206	6.1								4.72	1.90
F208	8.0								6.30	2.20

※DIMENSIONS



【RGP-F3】

※GRAPHIC SYMBOL



※MODEL NUMBER DESIGNATION

RGP	F3	06	R	(B)	(D)	(F)
Series No.	Series No. (c.c./rev) F1. 0.6~8.0 F2. 1.3~8.0 F3. 4~30 F4.10~40	Displacement (c.c./rev) 06~40	Rotation (View From Shaft End) R:Clockwise L:Counter-Clockwise	Shaft Type Omit: Ø 15.88 Square Key B: Ø19.05 Square Key S9: SAE 9 Splined Key S11: SAE 11 Splined Key	Mounting Flange Omit: SAE 2 Bolt D: DIN 4 Bolt	In/Outlet Port Omit: Thread F: Flange

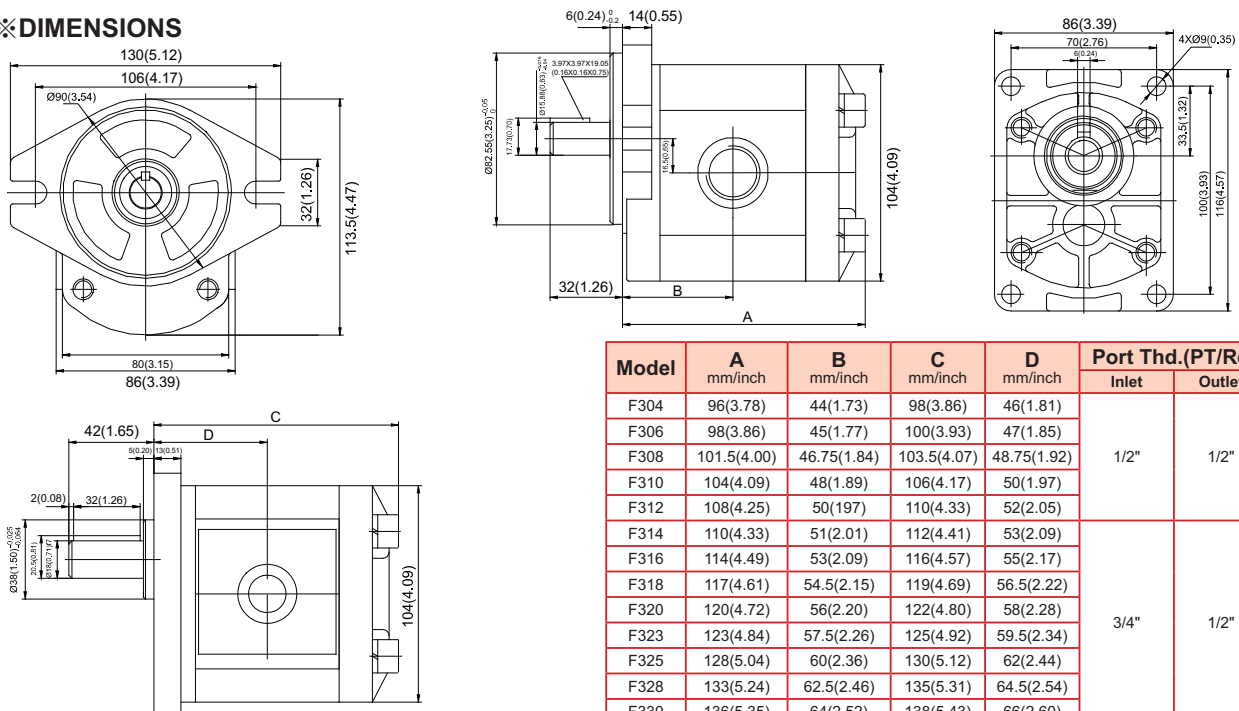
F

▶ Item With "(" may be omitted!!

※SPECIFICATION

Model	Displacement (c.c./rev)	Pressure MPa(Psi)		Speed (RPM)		Filter Precision (um)	Oil Temperature (°C)	Volumetric Efficiency (%)	Input Power (Kw)	Weight (kg)
		Rated	Max.	Max.	Min.					
F304	4.0	20 (2800)	25 (3500)	3500	600	≤ 25	-20~80	≥93	3.2	2.50
F306	6.0								4.7	2.60
F308	8.0								6.3	2.70
F310	10.0								7.8	2.80
F312	12.0								9.4	2.85
F314	14.0								11.0	2.88
F316	16.0								12.5	3.01
F318	18.0								14.1	3.12
F320	20.0								15.7	3.20
F323	23.0								18.0	3.29
F325	25.0	19.6	3.41							
F328	28.0	16	20	22.0	3.64					
F330	30.0	(2200)	(2800)	23.5	3.70					

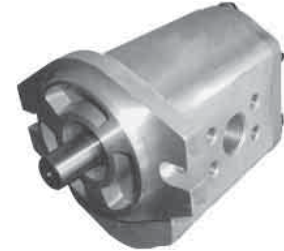
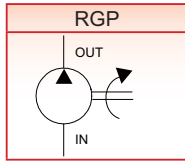
※DIMENSIONS



Model	A mm/inch	B mm/inch	C mm/inch	D mm/inch	Port Thd.(PT/Rc)	
					Inlet	Outlet
F304	96(3.78)	44(1.73)	98(3.86)	46(1.81)	1/2"	1/2"
F306	98(3.86)	45(1.77)	100(3.93)	47(1.85)		
F308	101.5(4.00)	46.75(1.84)	103.5(4.07)	48.75(1.92)		
F310	104(4.09)	48(1.89)	106(4.17)	50(1.97)		
F312	108(4.25)	50(1.97)	110(4.33)	52(2.05)		
F314	110(4.33)	51(2.01)	112(4.41)	53(2.09)	3/4"	1/2"
F316	114(4.49)	53(2.09)	116(4.57)	55(2.17)		
F318	117(4.61)	54.5(2.15)	119(4.69)	56.5(2.22)		
F320	120(4.72)	56(2.20)	122(4.80)	58(2.28)		
F323	123(4.84)	57.5(2.26)	125(4.92)	59.5(2.34)		
F325	128(5.04)	60(2.36)	130(5.12)	62(2.44)		
F328	133(5.24)	62.5(2.46)	135(5.31)	64.5(2.54)		
F330	136(5.35)	64(2.52)	138(5.43)	66(2.60)		

【RGP-F4】

※GRAPHIC SYMBOL



※MODEL NUMBER DESIGNATION

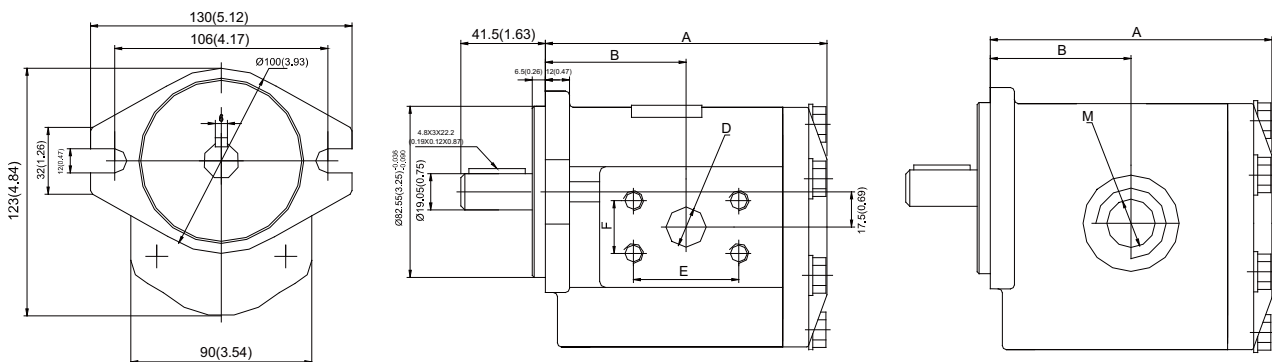
RGP	F4	10	R	(F)
Series No.	Series No. (c.c./rev) F1. 0.6~8.0 F2. 1.3~8.0 F3. 4~30 F4.10~40	Displacement (c.c./rev) 06~40	Rotation (View From Shaft End) R:Clockwise L:Counter-Clockwise	In/Outlet Port Omit: Thread F: Flange

▶ Item With "()" may be omitted!!

※SPECIFICATION

Model	Displacement (c.c./rev)	Pressure MPa(PSI)		Speed (RPM)		Filter Precision (um)	Oil Temperature (°C)	Volumetric Efficiency (%)	Input Power (Kw)	Weight (kg)
		Rated	Max.	Max.	Min.					
F410	10.0	20 (2800)	25 (3500)	3000	500	≤ 25	-20~80	≥93	8.2	3.3
F416	16.0								13.1	3.5
F425	25.0								20.4	3.8
F427	27.0								21.3	3.9
F430	30.0								24.1	4.0
F432	32.0								26.1	4.1
F440	40.0								32.7	4.3

※DIMENSIONS



Model	A mm/inch	B mm/inch	Port Thd.(PT/Rc)		Flange Inlet			Flange Outlet		
			Inlet	Outlet	D	E	F	D	E	F
F410	108(4.25)	53.5(2.11)	3/4"	1/2"	23(0.91)	47.6(1.87)	22.2(0.87)	20(0.79)	47.6(1.87)	22.2(0.87)
F416	114(4.49)	56.5(2.22)								
F425	124(4.88)	62(2.44)								
F427	126(4.96)	62.5(2.46)	1"	3/4"	26(1.02)	52.4(2.06)	26.2(1.03)			
F430	131(5.16)	65(2.56)								
F432	133(5.24)	65(2.56)								
F440	142(5.59)	70(2.76)								

[RGP-F33]



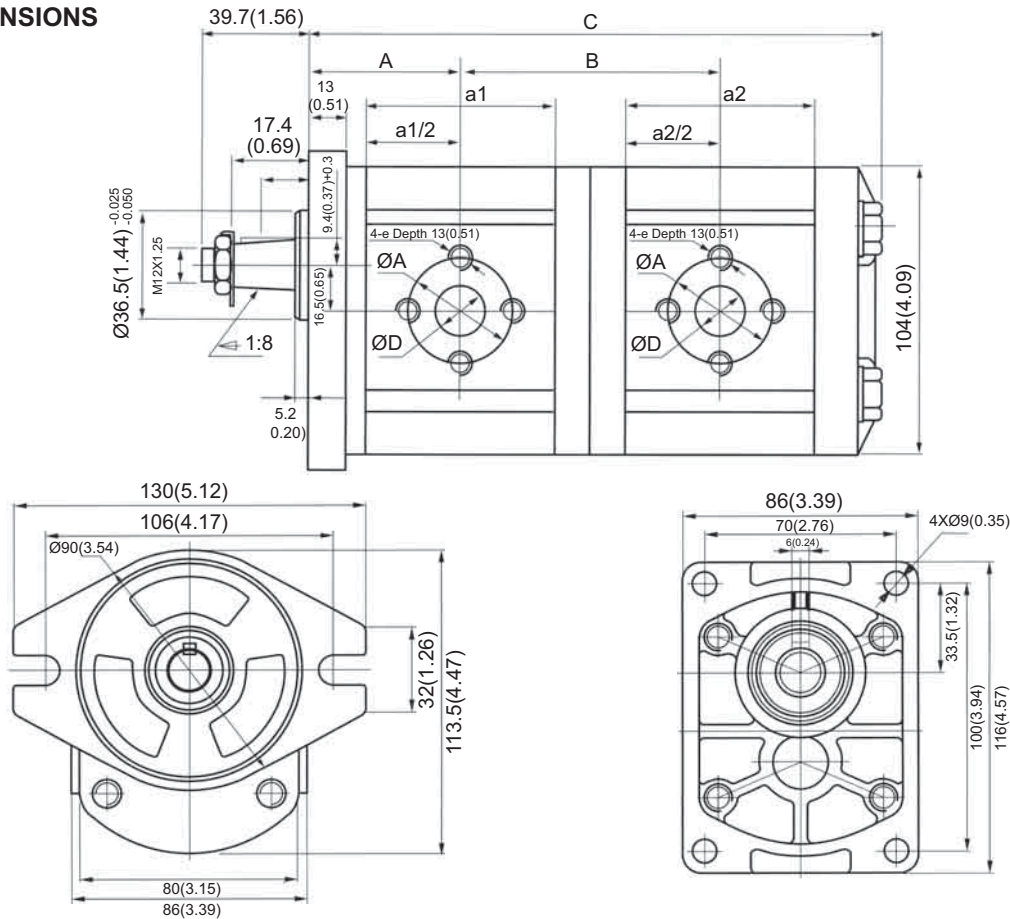
※MODEL NUMBER DESIGNATION

RGPD	F33	06/06	R	(B)	(D)	(F)
Series No.	Series No. (c.c./rev)	Displacement (c.c./rev) 06~40	Rotation (View From Shaft End) R:Clockwise L:Counter-Clockwise	Shaft Type Omit: Ø 15.88 Square Key B: Ø19.05 Square Key S9: SAE 9 Splined Key S11: SAE 11 Splined Key	Mounting Flange Omit: SAE 2 Bolt D: DIN 4 Bolt	In/Outlet Port Omit: Thread F: Flange

F

▶ Item With "(" may be omitted!!

※DIMENSIONS

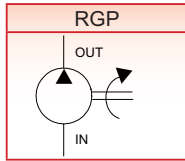


Model	A mm/inch	B mm/inch	C mm/inch
RGP-F33-*/-R	19(0.75)+a1/2	26(1.02)+a1/2+a2/2	68.5(2.70)+a1+a2

Discharge (cc/rev)	a1, a2	Flange Inlet			Flange Outlet		
		D	E	F	D	E	F
4	52(2.05)	13(0.51)	30(1.18)	M6	13(0.51)	30(1.18)	M6
6	54(2.13)						
8	57.5(2.26)						
10	60(2.36)						
12	64(2.52)	20(0.79)	40(1.57)	M8	13(0.51)	30(1.18)	M6
14	66(2.60)						
16	70(2.76)						
20	76(2.99)						
25	84(3.31)						

【RGP-2A】

※GRAPHIC SYMBOL



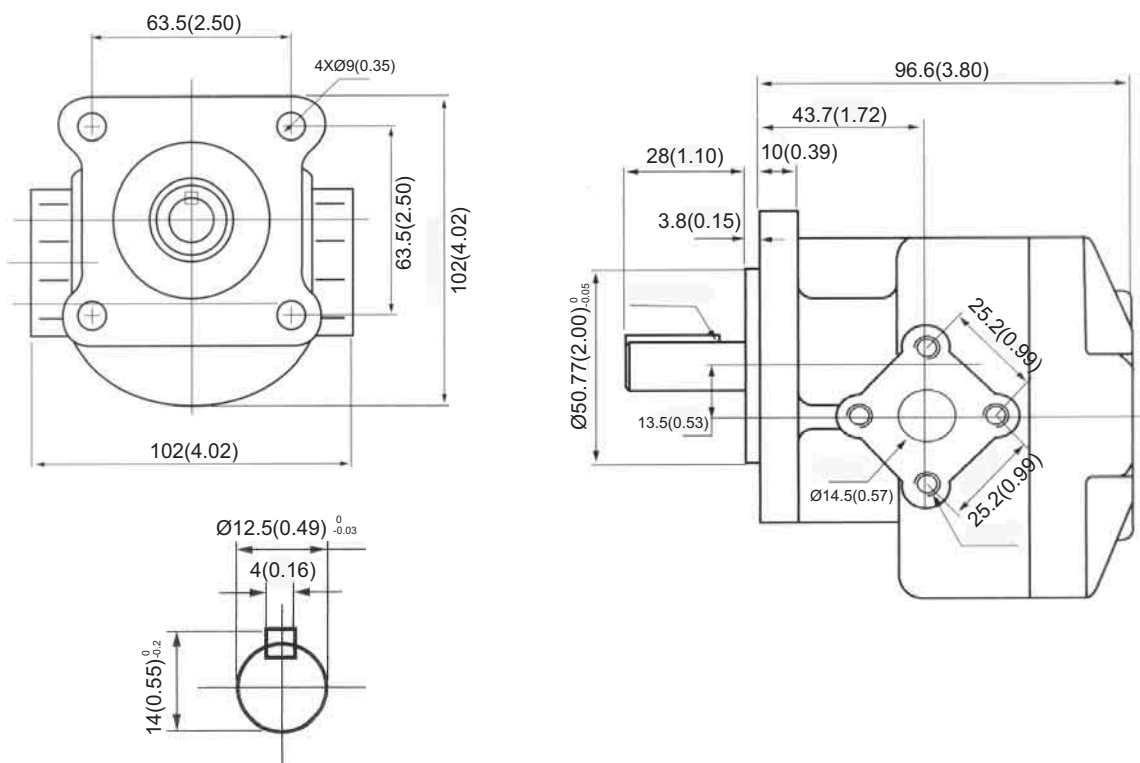
※MODEL NUMBER DESIGNATION

RGP	2A	02	R
Series No.	Series No.	Displacement (c.c/rev) 2~12	Rotation (View From Shaft End) R:Clockwise L:Counter-Clockwise

※SPECIFICATION

Model	Displacement (c.c/rev)	Pressure MPa(PSI)		Speed (RPM)		Filter Precision (um)	Oil Temperature (°C)	Volumetric Efficiency (%)	Weight (kg)
		Rated	Max.	Max.	Min.				
2A-02	2.0	21 (3000)	25 (3500)	5000	850	≤ 25	-20~80	≥93	1.55
2A-03	3.0								1.56
2A-04	4.0								1.58
2A-05	5.0			3000	600				1.60
2A-06	6.0								1.60
2A-08	8.0								1.65
2A-09	9.0	17.5 (2500)	21 (3000)	2000	500	1.65			
2A-11	11.0					1.70			
2A-12	12.0					1.70			

※DIMENSIONS



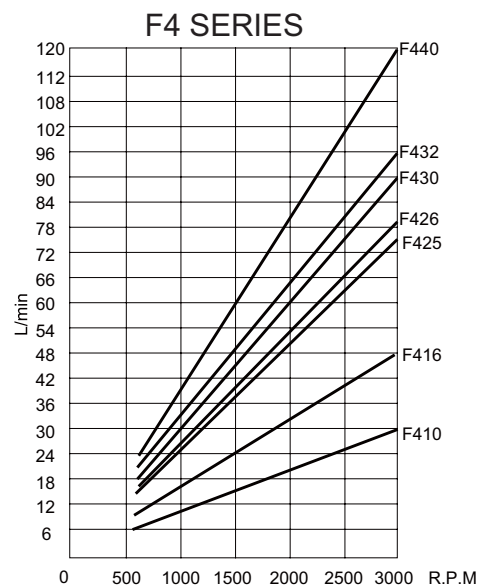
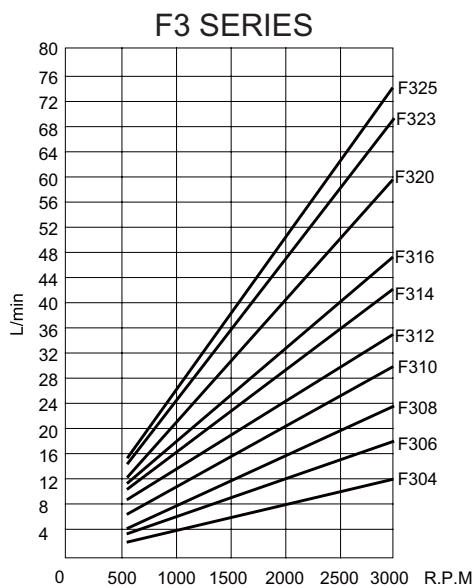
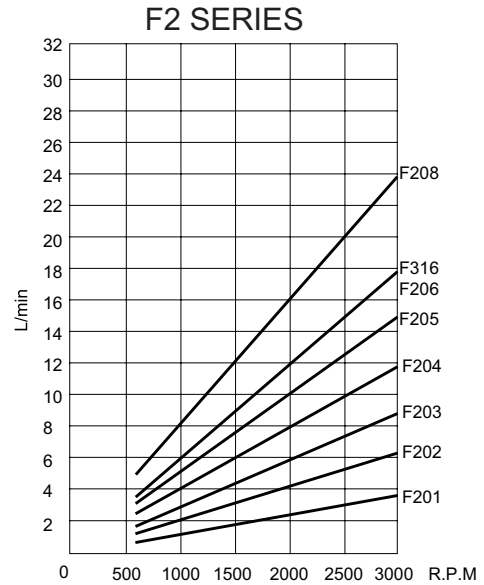
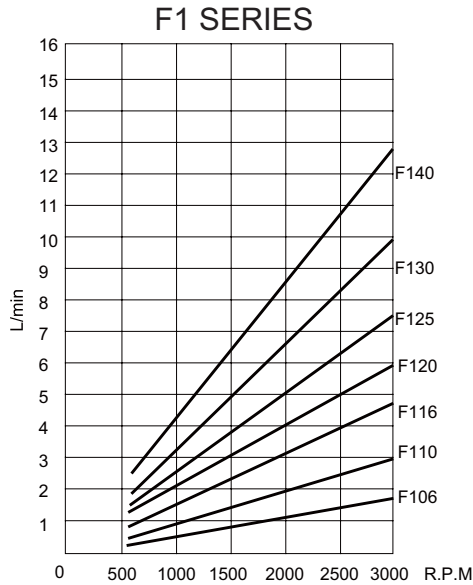


※ PERFORMANCE CURVE

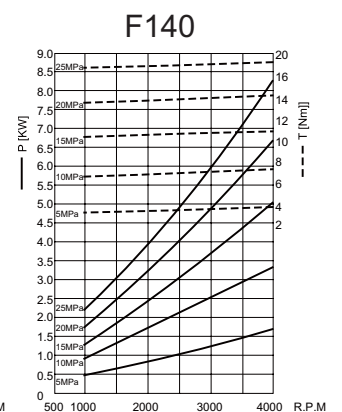
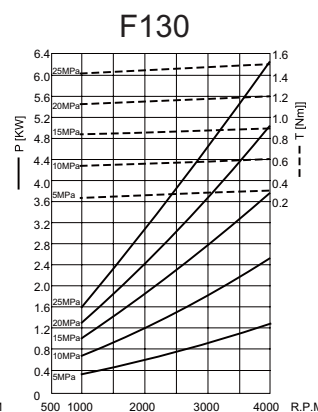
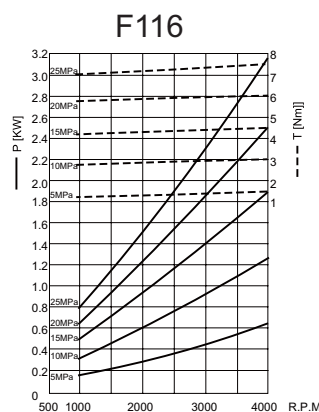
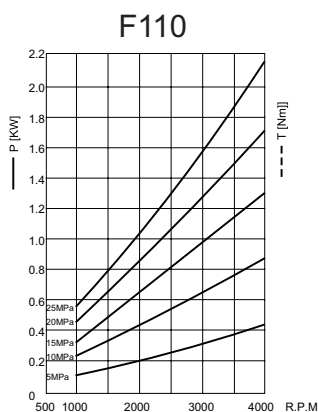
■ FLOW RATE CURVE

Displacement 0.6 ~ 4.2 c.c. /rev

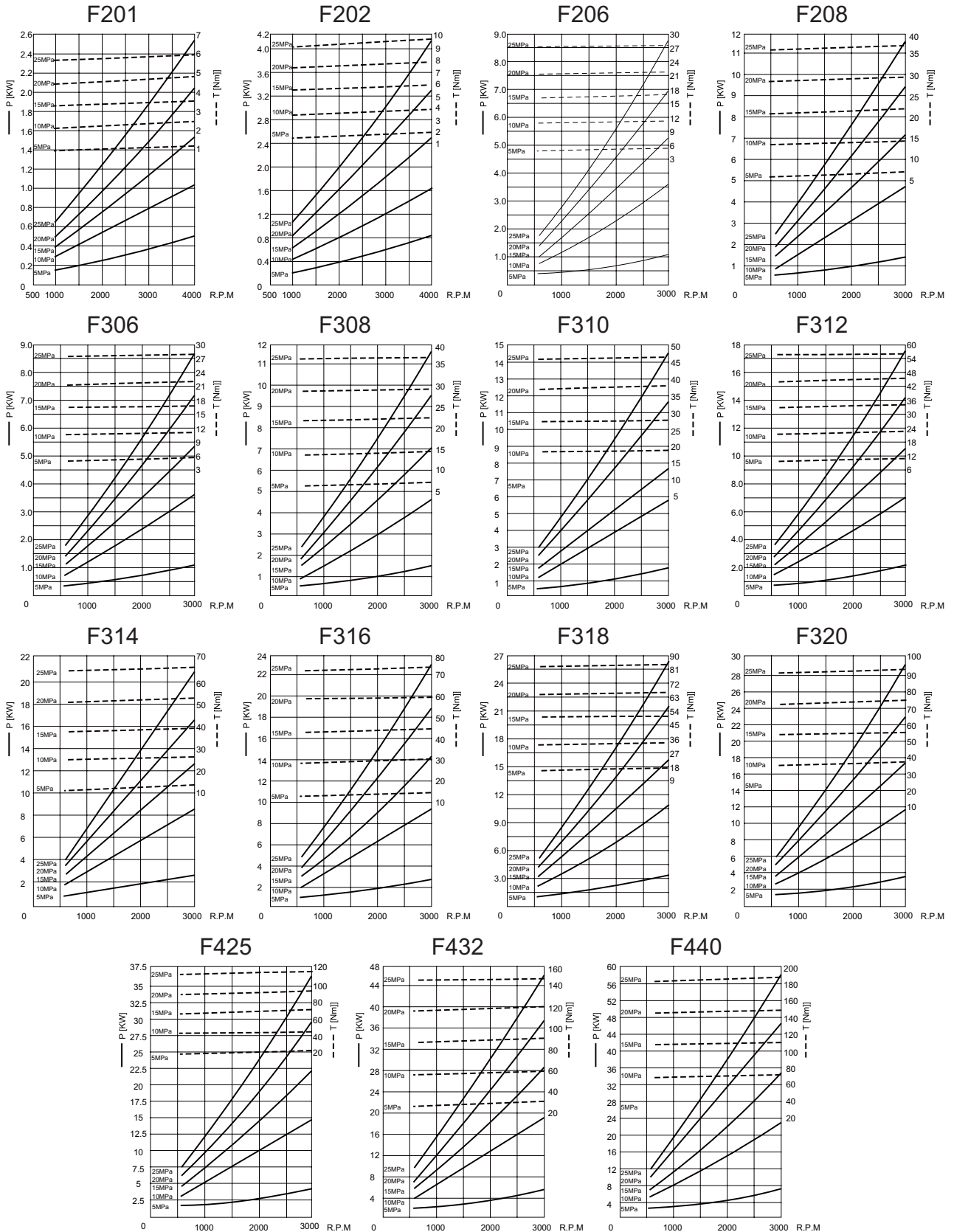
Performance curve test condition: Temperature 50°C



※ DRIVE POWER CURVE, DRIVE TORQUE CURVE



✳️ DRIVE POWER CURVE, DRIVE TORQUE CURVE



F