

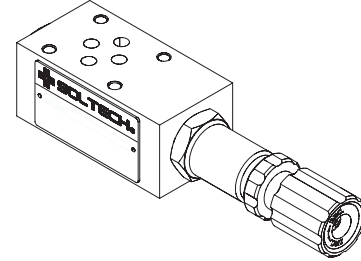
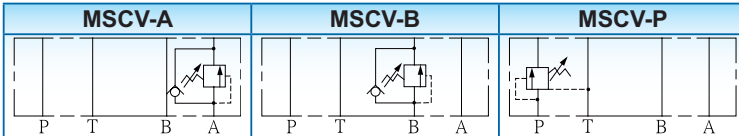
[MSCV-02]

ISO 4401-AB-03-4-A, CETOP 03, NG6, NFPA-D03

※SPECIFICATION

MODEL	MAX. OPER. PRES. Bar(PSI)	MAX. FLOW (ℓ/min)	WEIGHT (Kg)
MSCV-02-P/A/B	210(3045)	40	1.5

※GRAPHIC SYMBOL



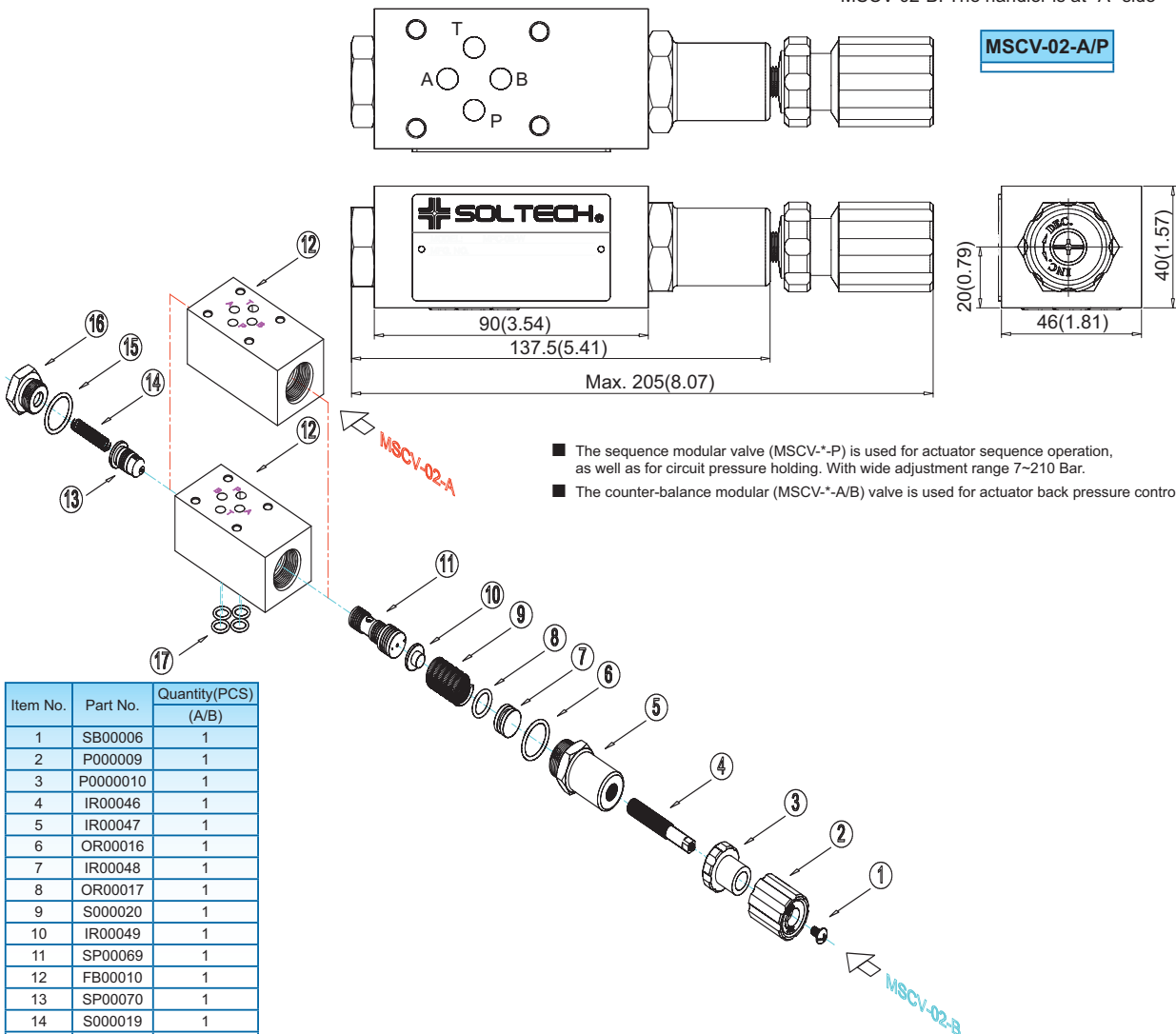
B

※MODEL NUMBER DESIGNATION

MSCV	02	A	1	(*)	(90)
SERIES NO.	VALVE SIZE 02: NG6	FUNCTION PORT P: "P" PORT A: "A" PORT B: "B" PORT	PRESSURE ADJ. RANGE (Kg/cm ²) 1: 7~70 2: 10~210	ADJ. KITS OMIT: WITH KNOB S: SOCKET HEAD CAP SCREW	OMIT: DIN 912 BOLTS 90: UNC BOLTS (NORTH AMERICA)

※DIMENSIONS

MSCV-02-A/P: The handler is at "B" side
MSCV-02-B: The handler is at "A" side



- The sequence modular valve (MSCV-*P) is used for actuator sequence operation, as well as for circuit pressure holding. With wide adjustment range 7~210 Bar.
- The counter-balance modular (MSCV-*A/B) valve is used for actuator back pressure control.

Item No.	Part No.	Quantity(PCS) (A/B)
1	SB00006	1
2	P000009	1
3	P000010	1
4	IR00046	1
5	IR00047	1
6	OR00016	1
7	IR00048	1
8	OR00017	1
9	S000020	1
10	IR00049	1
11	SP00069	1
12	FB00010	1
13	SP00070	1
14	S000019	1
15	OR00013	1
16	IR00045	1
17	OR00006	4

UNIT: M.M.(INCH)



SOLTECH

MODULAR(STACK) CONTROLS

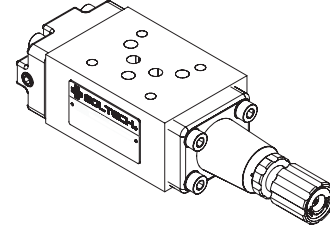
SEQUENCE & COUNTER-BALANCE MODULAR VALVES

【MSCV-03】

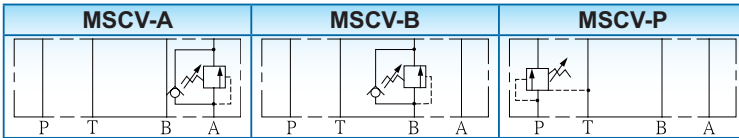
ISO 4401-AC-05-4-A, CETOP 05, NG10, NFPA-D05

※SPECIFICATION

MODEL	MAX. OPER. PRES. Bar(Psi)	MAX. FLOW (ℓ/min)	WEIGHT (Kg)
MSCV-03-P/A/B	210(3045)	80	4.5



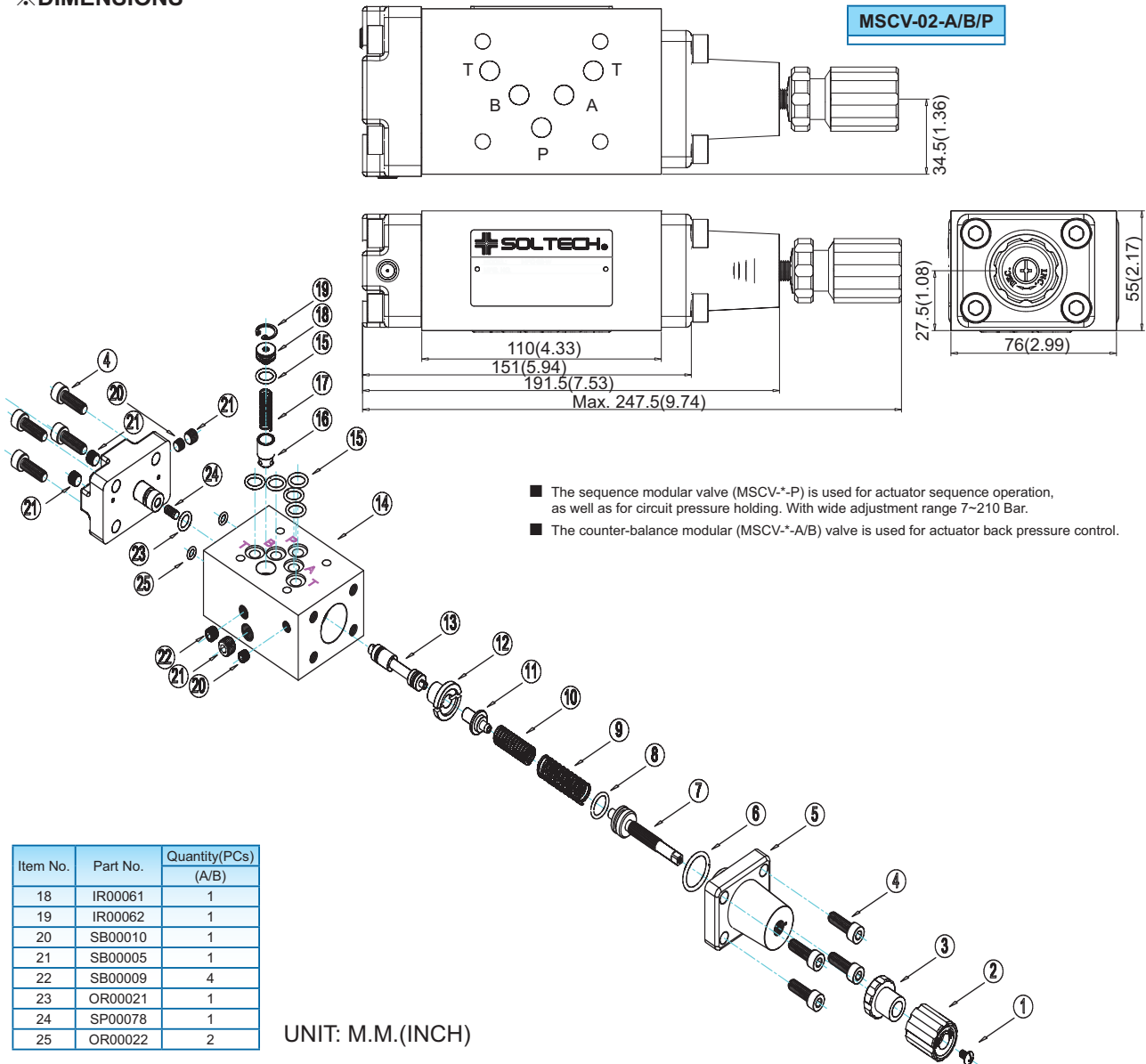
※GRAPHIC SYMBOL



※MODEL NUMBER DESIGNATION

MSCV	03	A	1	(*)	(90)
SERIES NO.	VALVE SIZE 03: NG10	FUNCTION PORT P: "P" PORT A: "A" PORT B: "B" PORT	PRESSURE ADJ. RANGE (Kg/cm ²) 1: 7~70 2: 10~210	ADJ. KITS OMIT: WITH KNOB S: SOCKET HEAD CAP SCREW	OMIT: DIN 912 BOLTS 90: UNC BOLTS (NORTH AMERICA)

※DIMENSIONS



- The sequence modular valve (MSCV-*P) is used for actuator sequence operation, as well as for circuit pressure holding. With wide adjustment range 7~210 Bar.
- The counter-balance modular (MSCV-*A/B) valve is used for actuator back pressure control.

Item No.	Part No.	Quantity(PCs) (A/B)
18	IR00061	1
19	IR00062	1
20	SB00010	1
21	SB00005	1
22	SB00009	4
23	OR00021	1
24	SP00078	1
25	OR00022	2

UNIT: M.M.(INCH)

B

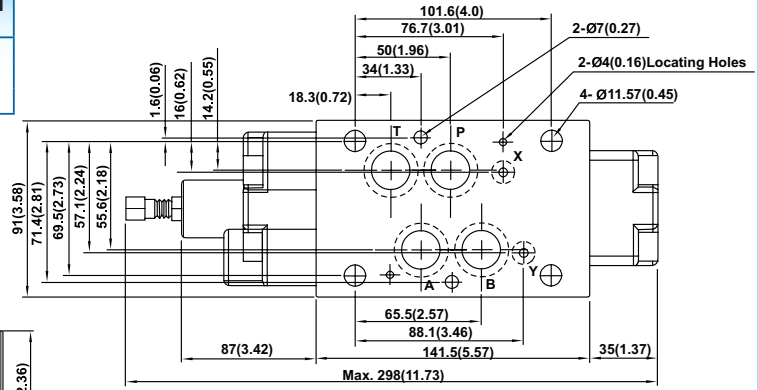
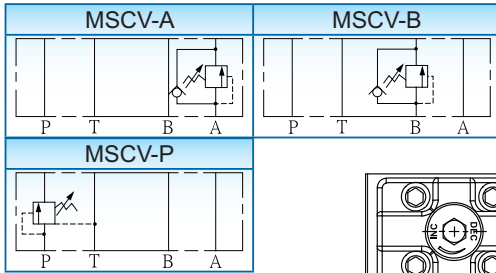
【MSCV-04】

ISO 4401-AD-07-4-A, CETOP 07, NG16, NFPA-D07

※SPECIFICATION

MODEL	MAX. OPER. PRES. Bar(PSI)	MAX. FLOW ℓ/min(U.S.GPM)	WEIGHT (Kg)
MSCV-04-P	210(3045)	190(50.2)	7.0
MSCV-04-A			
MSCV-04-B			

※GRAPHIC SYMBOL



- The sequence modular valve (MSCV-*-P) is used for actuator sequence operation, as well as for circuit pressure holding. With wide adjustment range 7~210 Bar.
- The counter-balance modular (MSCV-*-A/B) valve is used for actuator back pressure control.

※MODEL NUMBER DESIGNATION

MSCV	04	P	1	(*)	(90)
SERIES NO.	VALVE SIZE 04: NG16	FUNCTION PORT P: "P" PORT A: "A" PORT B: "B" PORT	PRESSURE ADJ. RANGE (Kgf/cm ²) 1: 7~70 2: 10~210	ADJ. KITS OMIT: WITH KNOB S: SOCKET HEAD CAP SCREW	OMIT: DIN 912 BOLTS 90: UNC BOLTS (NORTH AMERICA STD.)

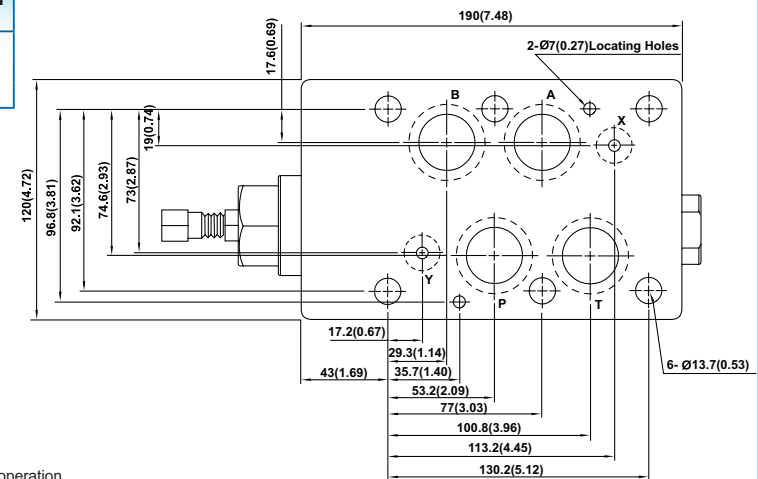
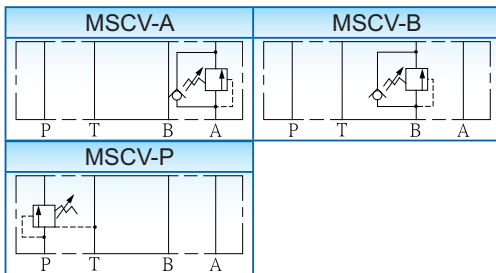
【MSCV-06】

ISO 4401-AE-08-4-A, CETOP 08, NG25, NFPA-D08

※SPECIFICATION

MODEL	MAX. OPER. PRES. Bar(PSI)	MAX. FLOW ℓ/min(U.S.GPM)	WEIGHT (Kg)
MSCV-06-P	210(3045)	300(79.3)	7.0
MSCV-06-A			
MSCV-06-B			

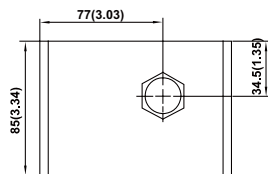
※GRAPHIC SYMBOL



- The sequence modular valve (MSCV-*-P) is used for actuator sequence operation, as well as for circuit pressure holding. With wide adjustment range 7~210 Bar.
- The counter-balance modular (MSCV-*-A/B) valve is used for actuator back pressure control.

※MODEL NUMBER DESIGNATION

MSCV	06	P	1	(*)	(90)
SERIES NO.	VALVE SIZE 06: NG25	FUNCTION PORT P: "P" PORT A: "A" PORT B: "B" PORT	PRESSURE ADJ. RANGE (Kgf/cm ²) 1: 7~70 2: 10~210	ADJ. KITS OMIT: WITH KNOB S: SOCKET HEAD CAP SCREW	OMIT: DIN 912 BOLTS 90: UNC BOLTS (NORTH AMERICA STD.)



UNIT: M.M.(INCH)