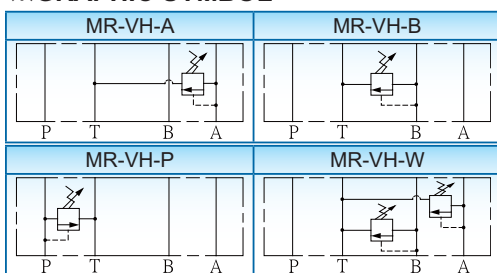


RELIEF VALVE 【MR-VH】

※SPECIFICATION

MODEL	MAX. OPER. PRES. (Kg _f /cm ²)/(MPa)	PRES. ADJ. RANGE (Kg _f /cm ²)/(MPa)	MAX. FLOW (ℓ/min)
MR-VH-P	720(72)	0~720(0~72)	8
MR-VH-A			
MR-VH-B			
MR-VH-W			

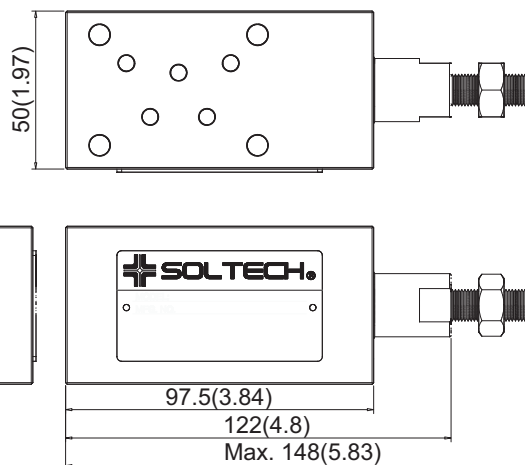
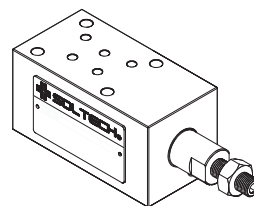
※GRAPHIC SYMBOL



※MODEL NUMBER DESIGNATION

MR	VH	P	(*)	(90)
SERIES NO.	HIGH PRESSURE	FUNCTION PORT P: "P" PORT A: "A" PORT B: "B" PORT W: "A&B" PORT	ADJ. KITS OMIT: WITH KNOB S: SOCKET HEAD CAP SCREW	OMIT: DIN 912 BOLTS 90: UNC BOLTS (NORTH AMERICA)

Mounting Interface: CETOP 03, NG6, ISO 4401 standard is also available

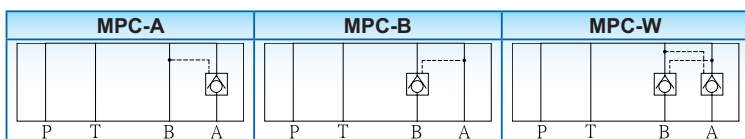


PILOT OPERATED CHECK VALVE 【MPC-VH】

※SPECIFICATION

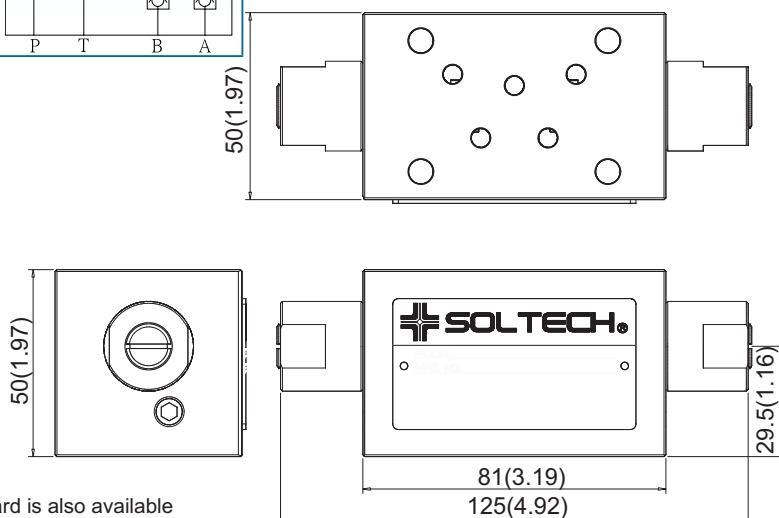
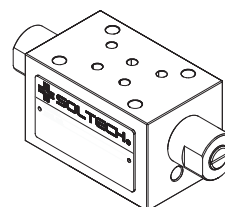
MODEL	MAX. OPER. PRES. (Kg _f /cm ²)/(MPa)	MAX. FLOW (ℓ/min)
MPC-VH-A	720(72)	8
MPC-VH-B		
MPC-VH-W		

※GRAPHIC SYMBOL



※MODEL NUMBER DESIGNATION

MPC	VH	A	(90)
SERIES NO.	HIGH PRESSURE	FUNCTION PORT A: "A" PORT B: "B" PORT W: "A&B" PORT	OMIT: DIN 912 BOLTS 90: UNC BOLTS (NORTH AMERICA)



UNIT: M.M.(INCHES)

Mounting Interface: CETOP 03, NG6, ISO 4401 standard is also available