



SOLTECH

MODULAR(STACK) CONTROLS

PRESSURE REDUCING MODULAR VALVES

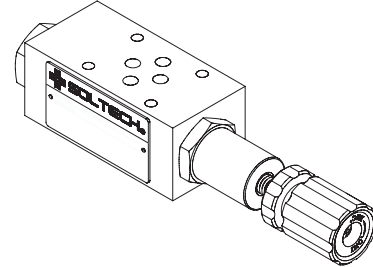
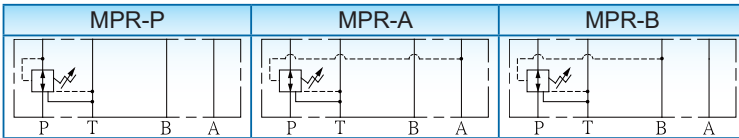
【MPR-02】

ISO 4401-AB-03-4-A, CETOP 03, NG6, NFFPA-D03

※SPECIFICATION

MODEL	MAX. OPER. PRES. Bar(PSI)	MAX. FLOW (ℓ/min)	WEIGHT (Kg)
MPR-02-P	210(3045)	40	1.4
MPR-02-A			
MPR-02-B			

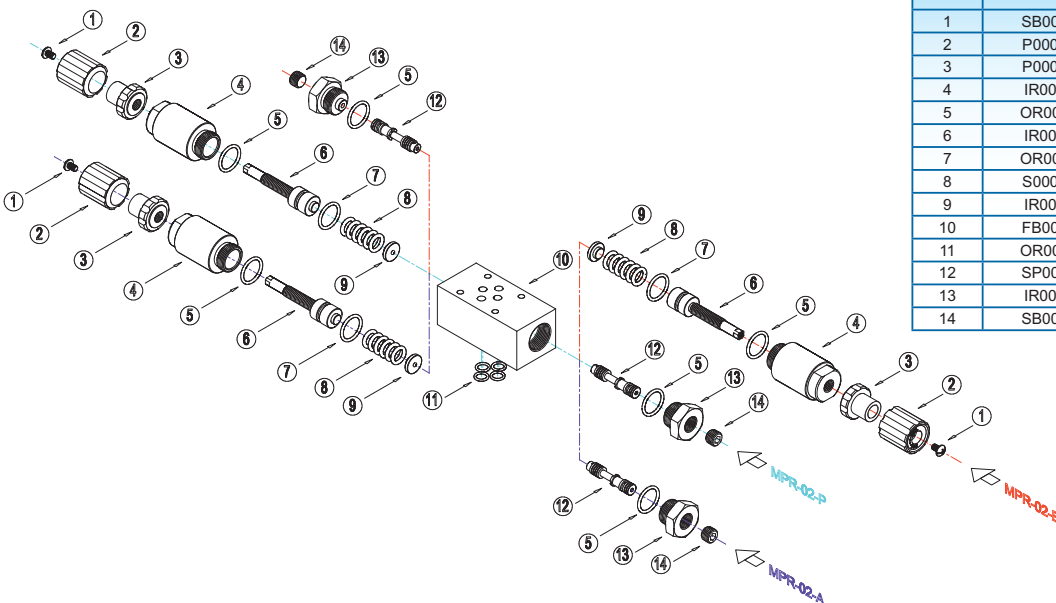
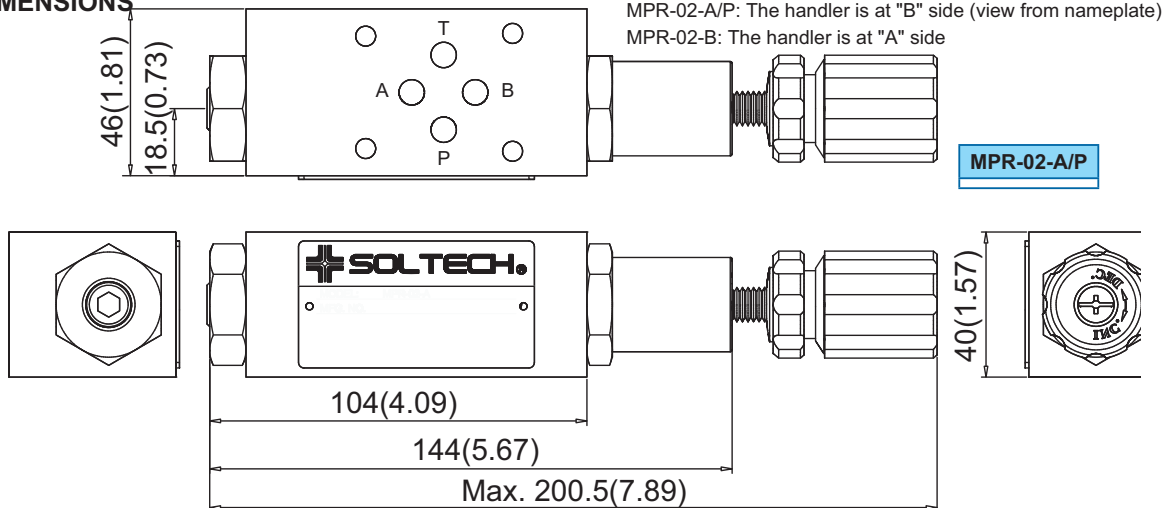
※GRAPHIC SYMBOL



※MODEL NUMBER DESIGNATION

MPR	02	P	1	(*)	(90)
SERIES NO.	VALVE SIZE 02: NG6	FUNCTION PORT P: "P" PORT A: "A" PORT B: "B" PORT	PRESSURE ADJ. RANGE (Kg/cm ²) 1: 8~35 2: 8~70 3: 35~210	ADJ. KITS OMIT: WITH KNOB S: SOCKET HEAD CAP SCREW	OMIT: DIN 912 BOLTS 90: UNC BOLTS (NORTH AMERICA)

※DIMENSIONS



Item No.	Part No.	Quantity(PCs) (A/B/P)
1	SB00006	1
2	P000009	1
3	P000010	1
4	IR00026	1
5	OR00009	2
6	IR00027	1
7	OR00008	1
8	S000006	1
9	IR00029	1
10	FB00009	1
11	OR00003	4
12	SP00061	1
13	IR00028	1
14	SB00005	1

UNIT: M.M.(INCH)

B



SOLTECH

MODULAR(STACK) CONTROLS

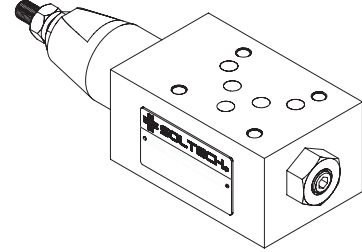
PRESSURE REDUCING MODULAR VALVES

【MPR-03】

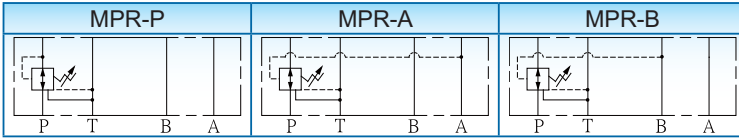
ISO 4401-AC-05-4-A, CETOP 05, NG10, NFPA-D05

※SPECIFICATION

MODEL	MAX. OPER. PRES. Bar(PSI)	MAX. FLOW (ℓ/min)	WEIGHT (Kg)
MPR-03-P	210(3045)	80	3.6
MPR-03-A			
MPR-03-B			



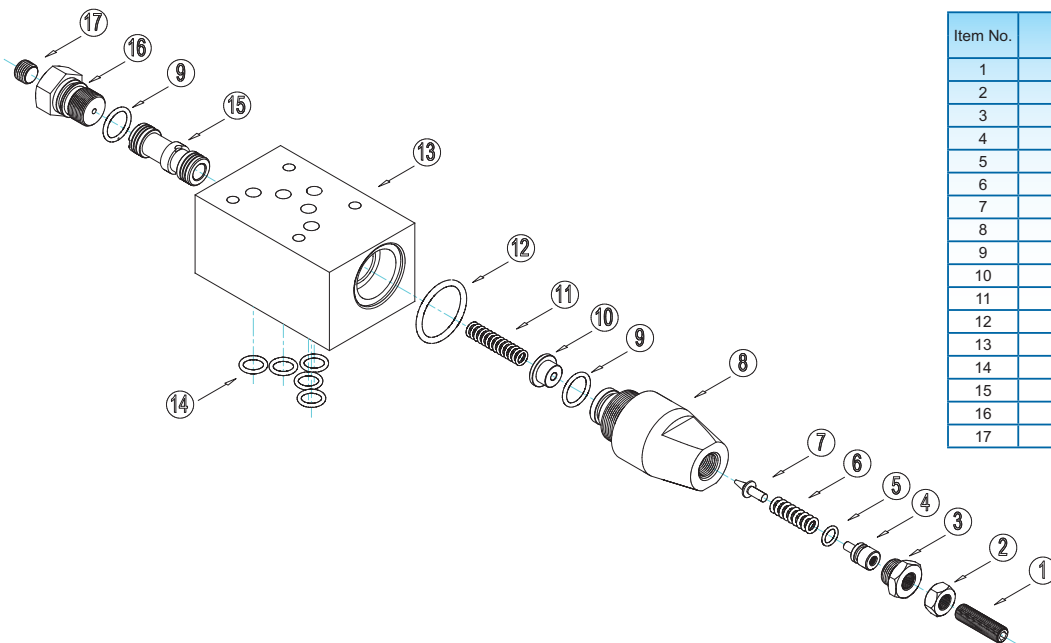
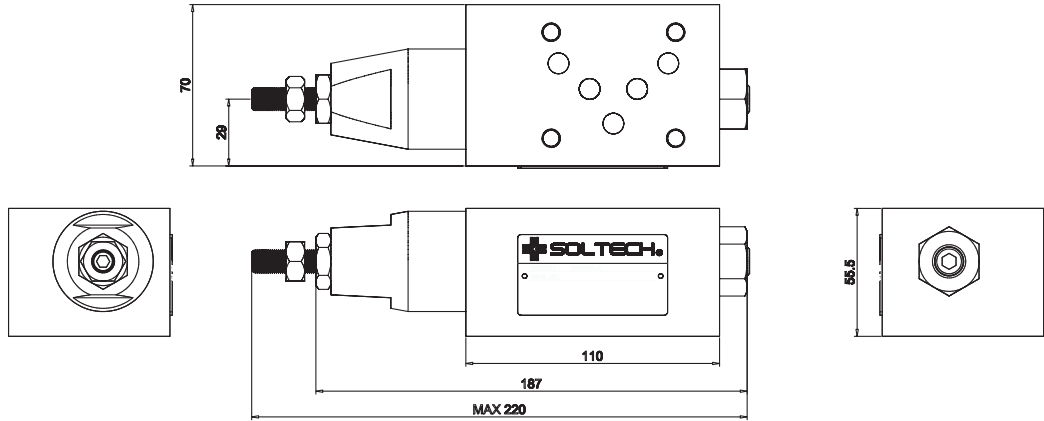
※GRAPHIC SYMBOL



※MODEL NO. DESIGNATION

MPR	03	P	1	(*)	(90)
SERIES NO.	VALVE SIZE 02: NG10	FUNCTION PORT P: "P" PORT A: "A" PORT B: "B" PORT	PRESSURE ADJ. RANGE (Kgf/cm ²) 1: 8~35 2: 8~70 3: 10~210	ADJ. KITS OMIT: WITH KNOB S: SOCKET HEAD CAP SCREW	OMIT: DIN 912 BOLTS 90: UNC BOLTS (NORTH AMERICA)

※DIMENSIONS



Item No.	Part No.	Quantity(PCs) (A/B/P)
1	SB00011	1
2	N000001	1
3	IR00063	1
4	IR00030	1
5	OR00011	1
6	S000010	1
7	IR00035	1
8	IR00036	1
9	OR00011	2
10	IR00031	1
11	S000011	1
12	OR00010	1
13	FB00008	1
14	OR00004	5
15	SP00062	1
16	IR00034	1
17	SB00005	1

UNIT: M.M.(INCH)

B



SOLTECH

MODULAR(STACK) CONTROLS

PRESSURE REDUCING MODULAR VALVES

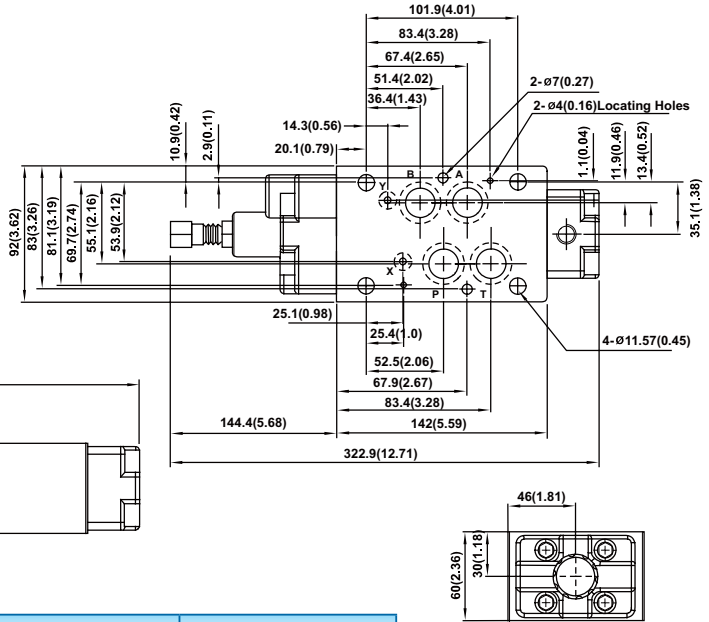
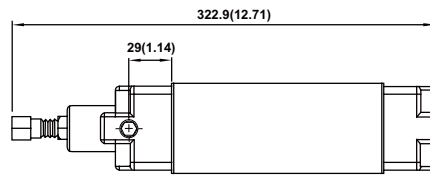
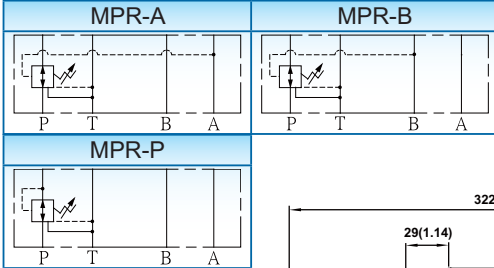
【MPR-04】

ISO 4401-AD-07-4-A, CETOP 07, NG16, NFPA-D07

※SPECIFICATION

MODEL	MAX. OPER. PRES. Bar(PSI)	MAX. FLOW ℓ/min(U.S.GPM)	WEIGHT (Kg)
MPR-04-P	210(3045)	190(50.2)	7.0
MPR-04-A			
MPR-04-B			

※GRAPHIC SYMBOL



※MODEL NUMBER DESIGNATION

MPR	04	P	1	(*)	(90)
SERIES NO.	VALVE SIZE 04: NG16	FUNCTION PORT P: "P" PORT A: "A" PORT B: "B" PORT	PRESSURE ADJ. RANGE (Kgf/cm ²) 1: 8~70 2: 8~140 3: 10~210	ADJ. KITS OMIT: WITH KNOB S: SOCKET HEAD CAP SCREW	OMIT: DIN 912 BOLTS 90: UNC BOLTS (NORTH AMERICA STD.)

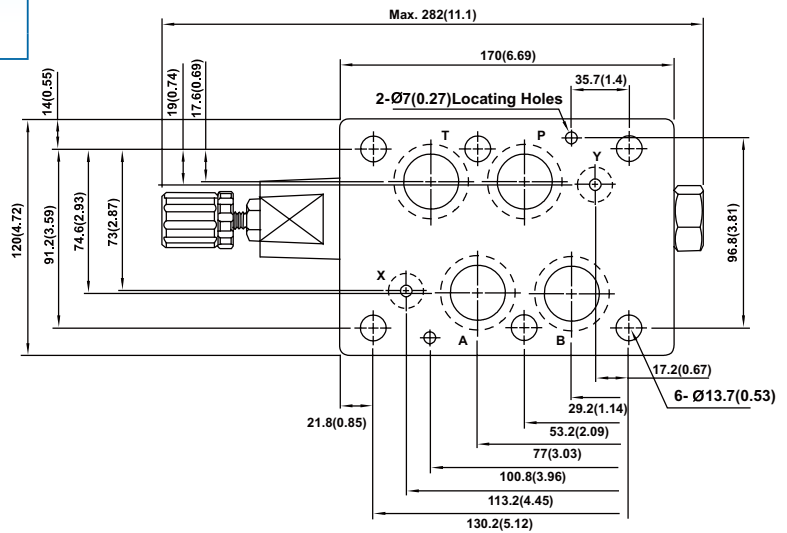
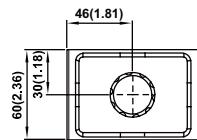
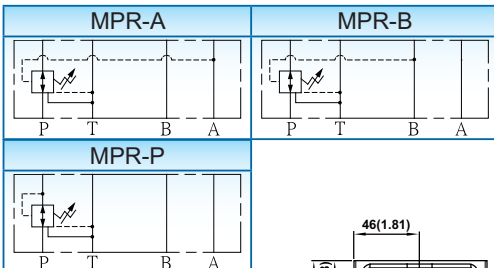
【MPR-06】

ISO 4401-AE-08-4-A, CETOP 08, NG25, NFPA-D08

※SPECIFICATION

MODEL	MAX. OPER. PRES. Bar(PSI)	MAX. FLOW ℓ/min(U.S.GPM)	WEIGHT (Kg)
MPR-06-P	210(3045)	300(79.3)	11.2
MPR-06-A			
MPR-06-B			

※GRAPHIC SYMBOL



※MODEL NUMBER DESIGNATION

MPR	06	P	1	(*)	(90)
SERIES NO.	VALVE SIZE 06: NG25	FUNCTION PORT P: "P" PORT A: "A" PORT B: "B" PORT	PRESSURE ADJ. RANGE (Kgf/cm ²) 1: 8~70 2: 8~140 3: 10~210	ADJ. KITS OMIT: WITH KNOB S: SOCKET HEAD CAP SCREW	OMIT: DIN 912 BOLTS 90: UNC BOLTS (NORTH AMERICA STD.)

UNIT: M.M.(INCH)

B