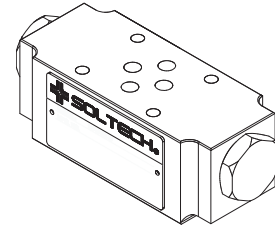


【MPC-02】

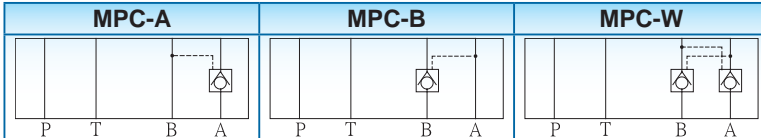
ISO 4401-AB-03-4-A, CETOP 03, NG6, NFPA-D03

※SPECIFICATION

MODEL	MAX. OPER. PRES. Bar(PSI)	PILOT RATIO		MAX. FLOW (ℓ/min)	WEIGHT (Kg)
MP(D)C-(ZL)-02-A	250(3625)	MPC-ZL	MPDC-ZL	40	1.4
MP(D)C-(ZL)-02-B		1.4:1	5.4:1		
MP(D)C-(ZL)-02-W					



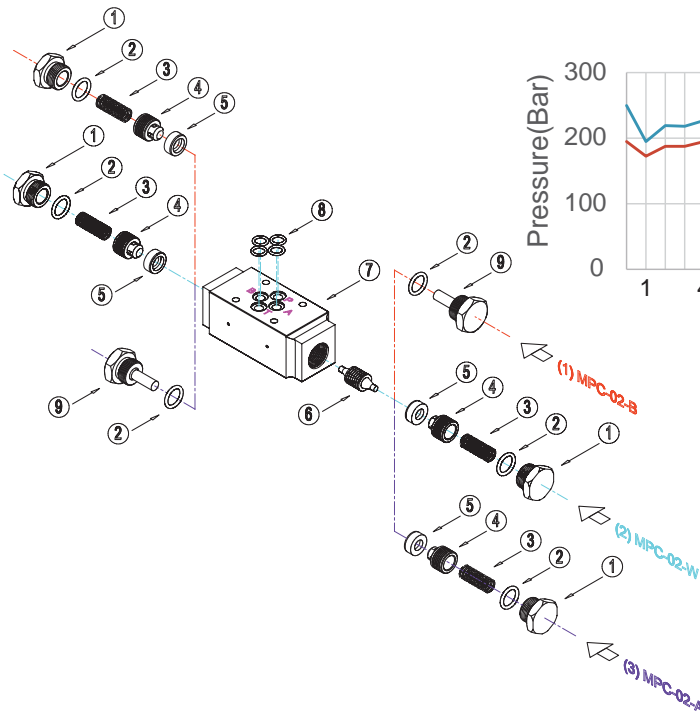
※GRAPHIC SYMBOL



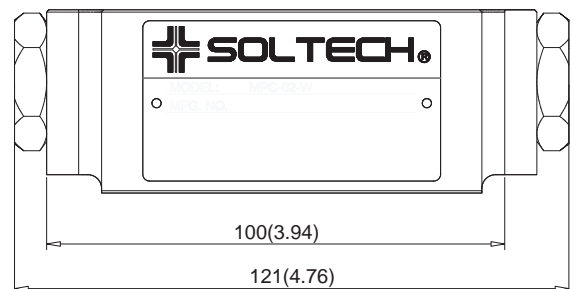
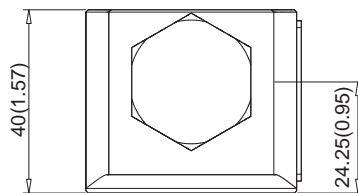
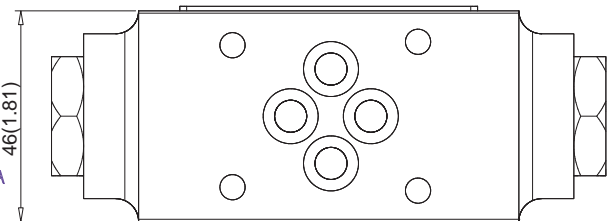
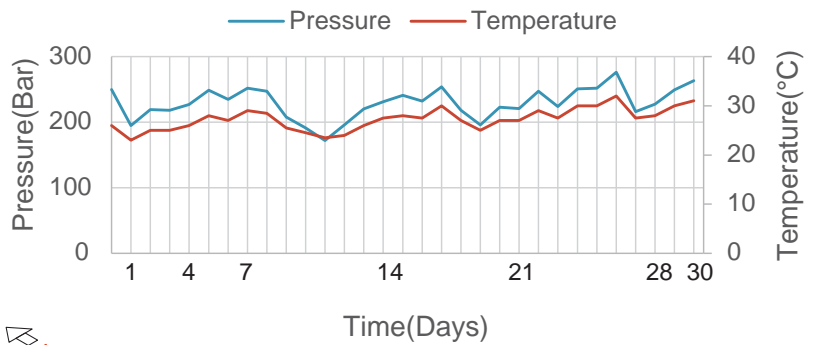
※MODEL NUMBER DESIGNATION

MPC-	(ZL)-	02-	A-	(90)
SERIES NO. MPC: Standard Type MPDC: Decompression type	OMIT: Standard Type ZL: Zero-Leakage Type	02: NG6	FUNCTION PORT A: "A" PORT B: "B" PORT W: "A"&"B" PORT	OMIT: DIN 912 BOLTS 90: UNC BOLTS (NORTH AMERICA)

※DIMENSIONS



※30 DAYS OF PRESSURE LOCKING DIAGRAM



Item No.	Part No.	Quantity(PCs)	
		(A/B)	(W)
1	IR00020	1	2
2	OR00024	2	2
3	S000005	2	2
4	IR00021	1	2
5	IR00018	1	2
6	SP00059	1	1
7	FB00003	1	1
8	OR00003	4	4
9	IR00019	1	0

UNIT: M.M.(INCH)

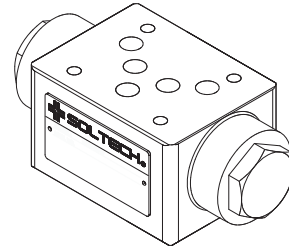
B

【MPC-03】

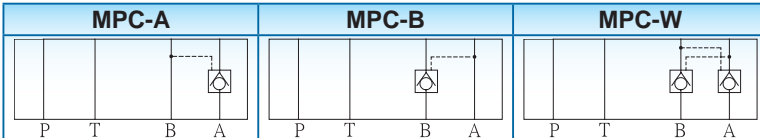
ISO 4401-AC-05-4-A, CETOP 05, NG10, NFPA-D05

※SPECIFICATION

MODEL	MAX. OPER. PRES. Bar(PSI)	PILOT RATIO		MAX. FLOW (ℓ/min)	WEIGHT (Kg)
MP(D)C-(ZL)-03-A	250(3625)	MPC-ZL	MPDC-ZL	80	2.7
MP(D)C-(ZL)-03-B		1.3:1	7.1:1		
MP(D)C-(ZL)-03-W					



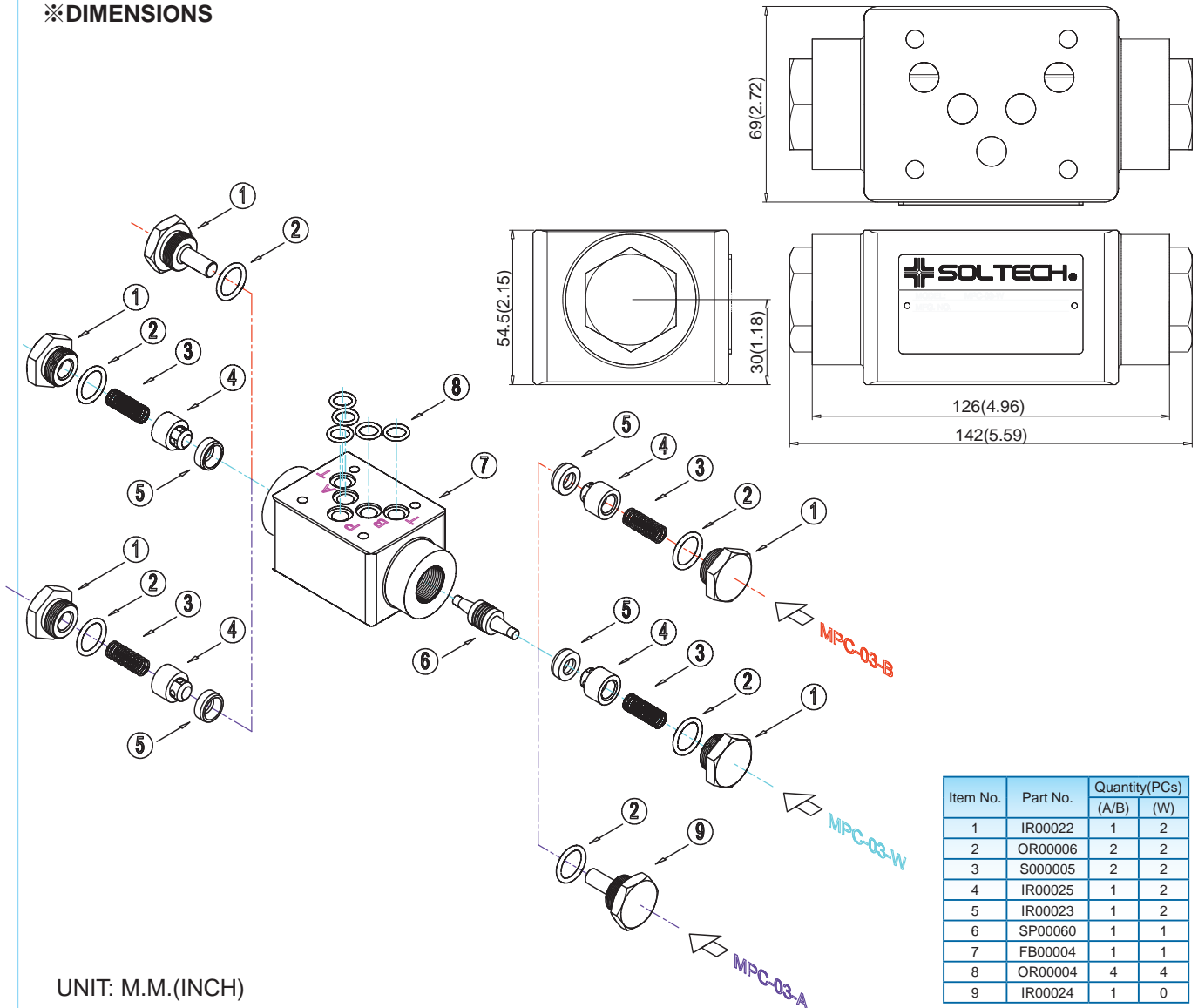
※GRAPHIC SYMBOL



※MODEL NUMBER DESIGNATION

MPC-	(ZL)-	03-	A-	(90)
SERIES NO. MPC: Standard Type MPDC: Decompression type	OMIT: Standard Type ZL: Zero-Leakage Type	03: NG10	FUNCTION PORT A: "A" PORT B: "B" PORT W: "A"&"B" PORT	OMIT: DIN 912 BOLTS 90: UNC BOLTS (NORTH AMERICA)

※DIMENSIONS



Item No.	Part No.	Quantity(PCs)	
		(A/B)	(W)
1	IR00022	1	2
2	OR00006	2	2
3	S000005	2	2
4	IR00025	1	2
5	IR00023	1	2
6	SP00060	1	1
7	FB00004	1	1
8	OR00004	4	4
9	IR00024	1	0

UNIT: M.M.(INCH)

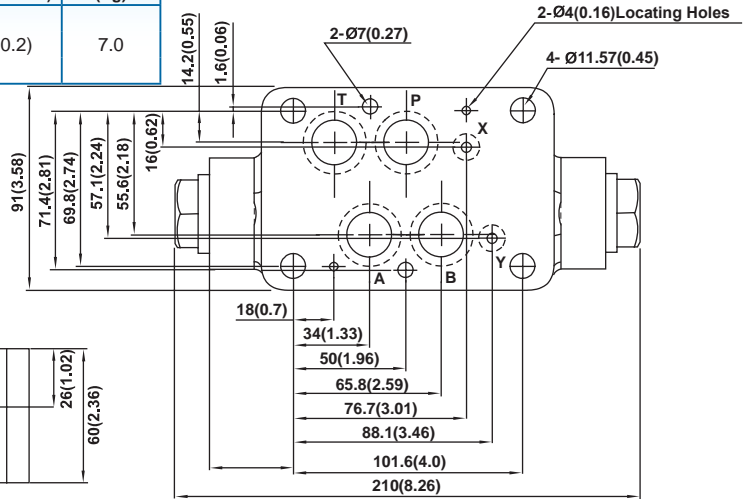
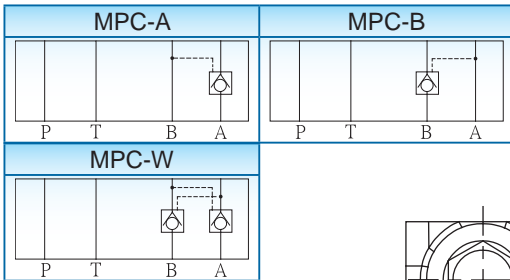
【MPC-04】

ISO 4401-AD-07-4-A, CETOP 07, NG16, NFPA-D07

※SPECIFICATION

MODEL	MAX. OPER. PRES. Bar(PSI)	PILOT RATIO	MAX. FLOW ℓ/min(U.S.GPM)	WEIGHT (Kg)
MPC-(ZL)-04-A	250(3625)	5.2:1	190(50.2)	7.0
MPC-(ZL)-04-B				
MPC-(ZL)-04-W				

※GRAPHIC SYMBOL



※MODEL NUMBER DESIGNATION

MPC-	(ZL)-	04-	W-	(90)
SERIES NO.	OMIT: Standard Type ZL: Zero-Leakage Type	VALVE SIZE 04: NG16	FUNCTION PORT A: "A" PORT B: "B" PORT W: "A&B" PORT	OMIT: DIN 912 BOLTS 90: UNC BOLTS (NORTH AMERICA STD.)

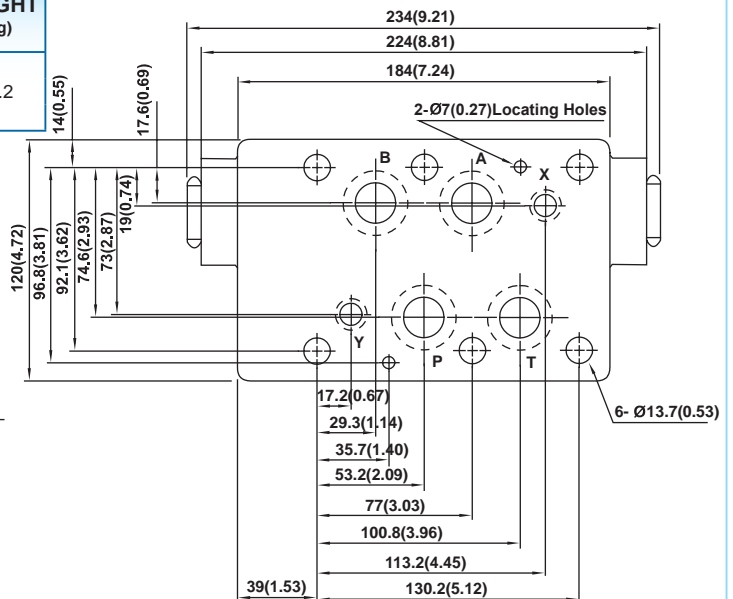
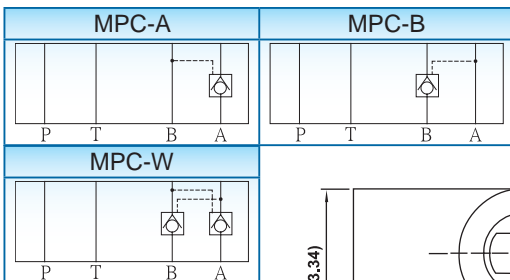
【MPC-06】

ISO 4401-AE-08-4-A, CETOP 08, NG25, NFPA-D08

※SPECIFICATION

MODEL	MAX. OPER. PRES. Bar(PSI)	PILOT RATIO	MAX. FLOW ℓ/min(U.S.GPM)	WEIGHT (Kg)
MPC-(ZL)-06-A	250(3625)	49.5:1	300(79.3)	11.2
MPC-(ZL)-06-B				
MPC-(ZL)-06-W				

※GRAPHIC SYMBOL



※MODEL NUMBER DESIGNATION

MPC-	(ZL)-	06-	W-	(90)
SERIES NO.	OMIT: Standard Type ZL: Zero-Leakage Type	VALVE SIZE 06: NG25	FUNCTION PORT A: "A" PORT B: "B" PORT W: "A&B" PORT	OMIT: DIN 912 BOLTS 90: UNC BOLTS (NORTH AMERICA STD.)

UNIT: M.M.(INCH)